

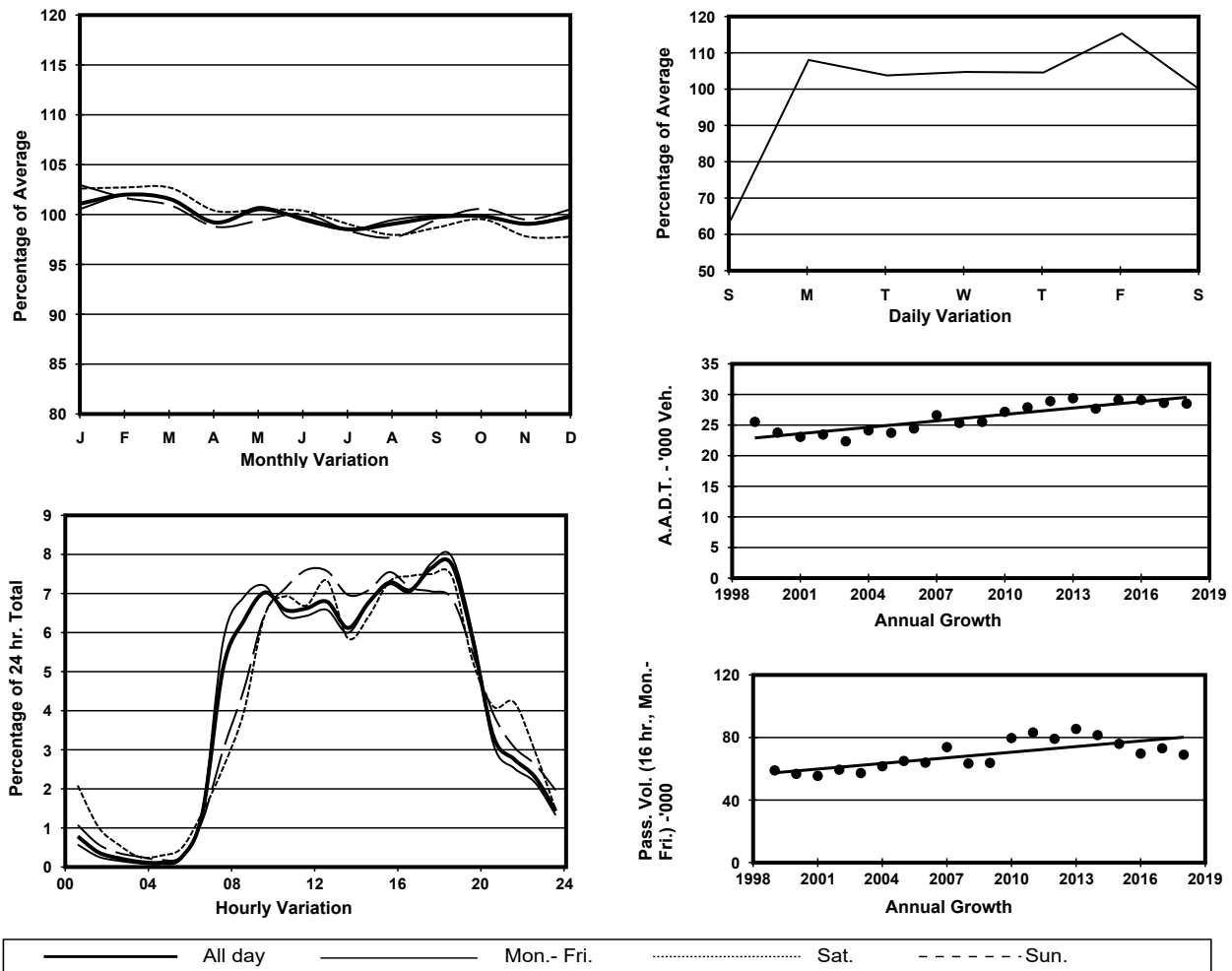
YEAR 2018

Location Screenline H-H(Boundary Between the Peak and the rest of Hong Kong Island)

Stations on Cordon/Screenline

2203 and 2205

## 1. TRAFFIC FLOW VARIATION AND GROWTH



## 2. TRAFFIC CHARACTERISTICS (BY DIRECTION)

Parameter	All - Day	Mon. - Fri.	Sat.	Sun.
<b>UP BOUND</b>				
A.A.D.T.	14300	15650	14540	9330
R 12 / 24 - %	80.4	81.4	78.5	75.2
R 16 / 24 - %	95	95.5	93.9	92.3
AM Peak Hour	0900-1000	0900-1000	0900-1000	0900-1000
One-way flow at AM peak hour	1060	1200	960	600
T - % (AM)	-	0.9	-	-
PM Peak Hour	1800-1900	1800-1900	1600-1700	1600-1700
One-way flow at PM peak hour	1100	1250	1030	740
T - % (PM)	-	2	-	-
Prop.of commercial vehicles - 16 hr.	-	4.1	-	-
<b>DOWN BOUND</b>				
A.A.D.T.	14210	15550	14480	9220
R 12 / 24 - %	81.7	82.7	79.6	76.6
R 16 / 24 - %	95.6	96.3	94.3	92.6
AM Peak Hour	0900-1000	0800-0900	0900-1000	0900-1000
One-way flow at AM peak hour	950	1070	920	600
T - % (AM)	-	5.1	-	-
PM Peak Hour	1800-1900	1700-1800	1800-1900	1800-1900
One-way flow at PM peak hour	1110	1240	1060	720
T - % (PM)	-	3.1	-	-
Prop.of commercial vehicles - 16 hr.	-	5.7	-	-

## 3. OTHER INFORMATION AND COMMENT

**4. Vehicle classification and occupancy - Monday to Friday**

Time		Class of vehicle									
		Motor Cycle	Private Car	Taxi	Private LB	PLB	Goods veh.		Non Fr. Bus	Fr. Bus	
							Light	M & H		SD	DD
0700-0800	Pro	1.0	47.5	35.2	3.1	2.2	2.9	0.0	7.1	0.0	1.0
	Ocp	1.0	1.7	2.1	5.4	11.3	1.6	0.0	8.9	0.0	26.8
0800-0900	Pro	1.6	65.3	22.2	0.2	1.0	3.6	0.4	5.1	0.0	0.6
	Ocp	1.0	1.5	2.4	1.0	13.2	2.2	2.0	11.5	0.0	23.3
0900-1000	Pro	1.6	62.8	24.2	0.4	0.7	8.3	0.7	0.9	0.0	0.6
	Ocp	1.1	1.5	2.2	1.0	9.0	1.8	1.2	8.5	0.0	19.2
1000-1100	Pro	2.1	54.3	22.2	0.0	0.9	14.5	2.3	2.9	0.0	0.7
	Ocp	1.0	1.6	2.0	0.0	7.6	1.4	1.3	14.6	0.0	19.5
1100-1200	Pro	3.1	56.1	20.2	1.0	1.3	11.6	3.0	2.9	0.0	0.8
	Ocp	1.1	1.4	2.0	2.0	7.6	1.6	1.5	12.3	0.0	19.8
1200-1300	Pro	2.7	59.7	20.3	0.2	1.5	10.1	1.3	3.6	0.0	0.7
	Ocp	1.1	1.5	2.0	2.0	6.3	1.6	1.7	12.7	0.0	19.8
1300-1400	Pro	0.7	54.5	25.5	0.3	1.4	11.0	2.1	3.7	0.0	0.8
	Ocp	1.0	1.5	2.0	1.0	4.4	1.5	1.4	8.5	0.0	24.4
1400-1500	Pro	1.4	56.6	22.9	0.0	1.8	10.4	1.3	4.6	0.0	1.0
	Ocp	1.0	1.5	1.9	0.0	7.5	1.7	1.2	6.5	0.0	21.3
1500-1600	Pro	1.0	59.8	23.2	1.2	1.7	7.5	0.4	4.6	0.0	0.6
	Ocp	1.0	1.6	2.3	5.9	9.2	1.9	1.0	11.5	0.0	34.0
1600-1700	Pro	1.1	65.5	19.5	0.8	1.3	6.9	0.6	3.6	0.0	0.6
	Ocp	1.0	1.6	2.4	2.5	13.8	1.6	1.7	8.7	0.0	41.2
1700-1800	Pro	1.4	60.7	28.5	0.2	1.4	4.3	0.0	3.0	0.0	0.4
	Ocp	1.0	1.7	2.7	2.0	11.6	1.8	0.0	15.8	0.0	53.0
1800-1900 Peak Hour	Pro	2.5	64.6	27.3	0.4	1.3	1.4	0.2	2.0	0.0	0.3
	Ocp	1.1	1.6	2.2	1.5	12.7	1.5	1.0	13.0	0.0	30.0
1900-2000	Pro	1.6	69.5	25.9	0.0	0.8	0.6	0.5	0.8	0.0	0.4
	Ocp	1.0	1.5	2.3	0.0	7.6	1.4	1.0	10.7	0.0	22.9
2000-2100	Pro	0.8	61.7	31.4	0.0	1.4	1.4	0.3	2.1	0.0	0.8
	Ocp	1.5	1.6	2.4	0.0	7.9	1.5	3.0	15.6	0.0	14.5
2100-2200	Pro	1.9	53.0	36.8	0.6	2.8	1.8	0.0	1.9	0.0	1.2
	Ocp	1.0	1.5	2.3	2.0	6.0	2.0	0.0	9.0	0.0	9.9
2200-2300	Pro	2.4	51.9	37.4	0.5	3.2	1.0	0.0	2.6	0.0	1.0
	Ocp	1.2	1.5	2.2	2.0	5.7	1.0	0.0	12.0	0.0	10.6
16 hours	Pro	1.7	59.7	25.2	0.6	1.4	6.6	0.9	3.3	0.0	0.7
	Ocp	1.0	1.6	2.2	3.7	9.1	1.7	1.4	10.9	0.0	24.8

**Legend**

**Pro.** Proportion of vehicles in % (Sum may not add up to 100% due to figure rounding)\*

**Ocp.** Average occupancy of vehicles including both driver and passengers\*

**M&H** Medium and Heavy

**\*** All traffic data are collected from combined bounds except for one way traffic